

An abstract painting with a complex, layered composition. The background is a mix of light and dark tones, with prominent areas of yellow-green and blue. The foreground features several vertical, textured strokes in white and light green, suggesting architectural elements like windows or door frames. The overall style is expressive and gestural, with visible brushwork and a sense of depth and movement.

DARLA  
BJORK

WINDOWS:  
On the Other Side



*Window Series #7*, Encaustic and Oil Stick on Wood Panel,  
29" x 29", 2013

## Darla Bjork's Windows: On the Other Side

Darla Bjork's oil stick and encaustic *Windows* vibrate between ethereal landscape abstractions and architectonic, vividly spatial images—a romantic dialogue connecting the outside with what comes from within. Taking elements of her fluid earlier series, especially *Water*, the *Windows* are developed according to a grid: still effervescent, still active, but overseen by a monumental, painterly architecture. Window panes, window frames, girders, posts and lintels, Stonehenge in the blue mist, the towers of Notre Dame—maybe they are there, or maybe they are not, hovering in an uncertain, atmospheric domain of sky blue, pale green, and yellow. Bjork's expressionistic layering takes all-over composition to a kind of epic infinity, while the question of when a painting is "finished" is rooted in the series' conceptual focus on life and what, if anything, comes after.

Initiated by the approaching death of Bjork's mother—also an artist—the first of the series, *Windows #1*, is dark, visibly struggling. After Bjork's mother died, the *Windows* shifted to serene evocations of looking into the next world—existence or something less nameable on the other side. The surfaces of her powerful but peaceful grids are reinforced by lines etched and scratched with a screwdriver or dental tool, echoing the structure of the composition while revealing, this time literally, that which lies on the other side of the medium. Layers of color, hidden by newer layers, are resurrected in the scratchings. Surprising reds and blacks emerge with surreptitious fierceness from beneath the series' predominantly pastel tonalities.

The *Windows* transform the traditional pictorial relationship between object and setting, emphasizing instead the interchangeability between outside and inside, what is behind a structure versus in front of it, and what can hide beneath. With a compelling combination of intuition and decisiveness, Darla Bjork's *Windows* achieve the simultaneous expression of the Renaissance window into space, abstraction's shattering of that window—and the psychological crossbeams holding it all in place.

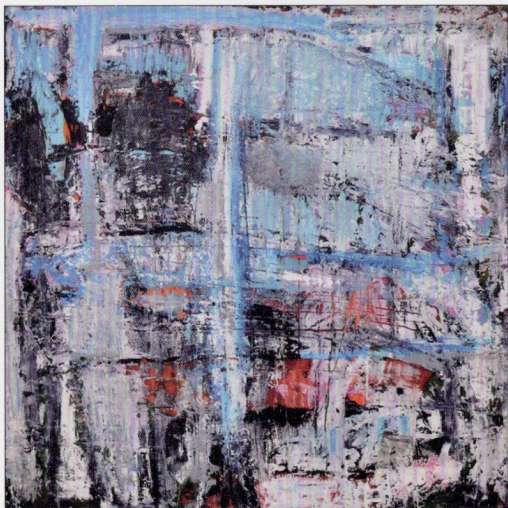
—Derin Tanyol



*Window Series #9*, Encaustic and Oil Stick on Wood Panel,  
24" x 24", 2013



*Window Series #8*, Encaustic and Oil Stick on Wood Panel,  
24" x 24", 2013



# DARLA BJORK

WINDOWS:  
On the Other Side

OCTOBER 1-26, 2013

*Window Series #1, Encaustic and Oil Stick on Wood Panel, 29" x 29", 2013*

OPENING RECEPTION:  
Thursday, October 3, 6-8PM

**SOHO20**  
C H E L S E A

547 W 27th St (#301) (off 11th Ave.)

NYC, NY 10001 • Tues - Sat 12-6

[www.soho20gallery.com](http://www.soho20gallery.com) • tel. 212.367.8994

Front piece: *Window Series #6, Encaustic and Oil Stick on Wood Panel, 29" x 29", 2013*